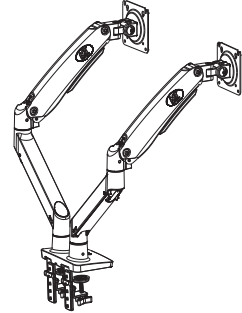




Ergonomic desktop mount installation manual



F195A
Flexi Desk Mount
Fits Display Size: 22"~32"
Max load: 6.6~26.4lbs (3-12kg) single
VESA: 75×75, 100×100mm

Severe personal injury and property damage can result from improper installation or assembly. Read the following warning carefully before beginning.

- Products must be installed by professional or installer.
- If you do not understand the instructions or have any concerns or questions, please contact a qualified local installer.
- Do not install or assemble if the product or hardware is damaged or missing, if you require replacement parts, please contact you local distributor for assistance.
- This product fits most 22"-32" LCD / monitor; maximum weight of LCD / monitor: 12kg / 26.4lbs.
- Installer-friendly and straight forward.
- For safe installation, the desk you are mounting to must support minimum 3 times the weight of the total load (the mount, the monitor and all accessories weight).
- Do not use this product for other than the original designed.
- This product contain moving parts, please use with caution.
- When installing monitor, please do not damage electrical wiring or power source.
- Installation and routing of monitor cables on the monitor bracket must comply with electro-technical regulations.
- Importantly, mains- and data-cables must be secured against twisting and squeezing or shearing.
- The manufacturer will bear no responsibility to the desk of mounting, or incidental or consequential damages arising thereof.
- The manufacturer disclaims any liability for the modifications, improper installation, or installation over the specified weight range. The manufacturer will not be liable for any damages arising out of the use of, or inability to use, the product.
- This product is designed for indoor used only, use of this product outdoor could lead to product failer and severe personal injury.
- ▲ This product contains a high pressure gas spring, fire and percussion prohibited. Also it is strictly prohibited to dismantle without professionals. Please return to the manufacturer or hand over to professional agencies if the product is abandoned. In order to ensure the

We reserve the right to modify or alter instructions. No modification or alteration without formal notice.

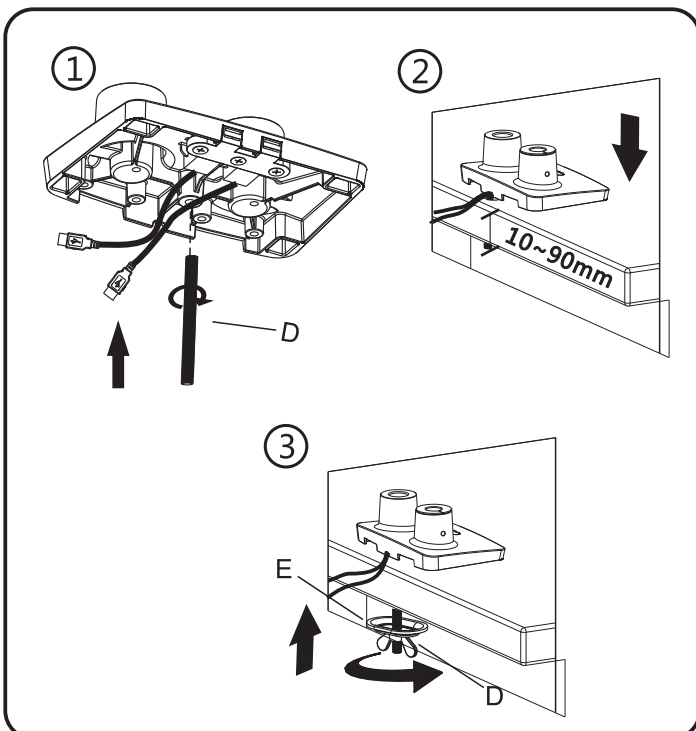
Symbols

	Tightening Direction loosening Direction		+ : Torque increased - : Torque reduced
	拧紧方向 拧松方向		+ 定点恒力加大 - 定点恒力减小
	Phillips Screwdriver		By Hand
	螺丝起子		用手
	Open-End Wrench		Hex Wrench
	开口扳手		六角扳手
	Adjustment		Pencil
	调整		铅笔
	Optional		Reminder
	可选		提示
	Warning		Hand Drill
	警告		手电钻
	Remove		Star Wrench
	移开		安全扳手

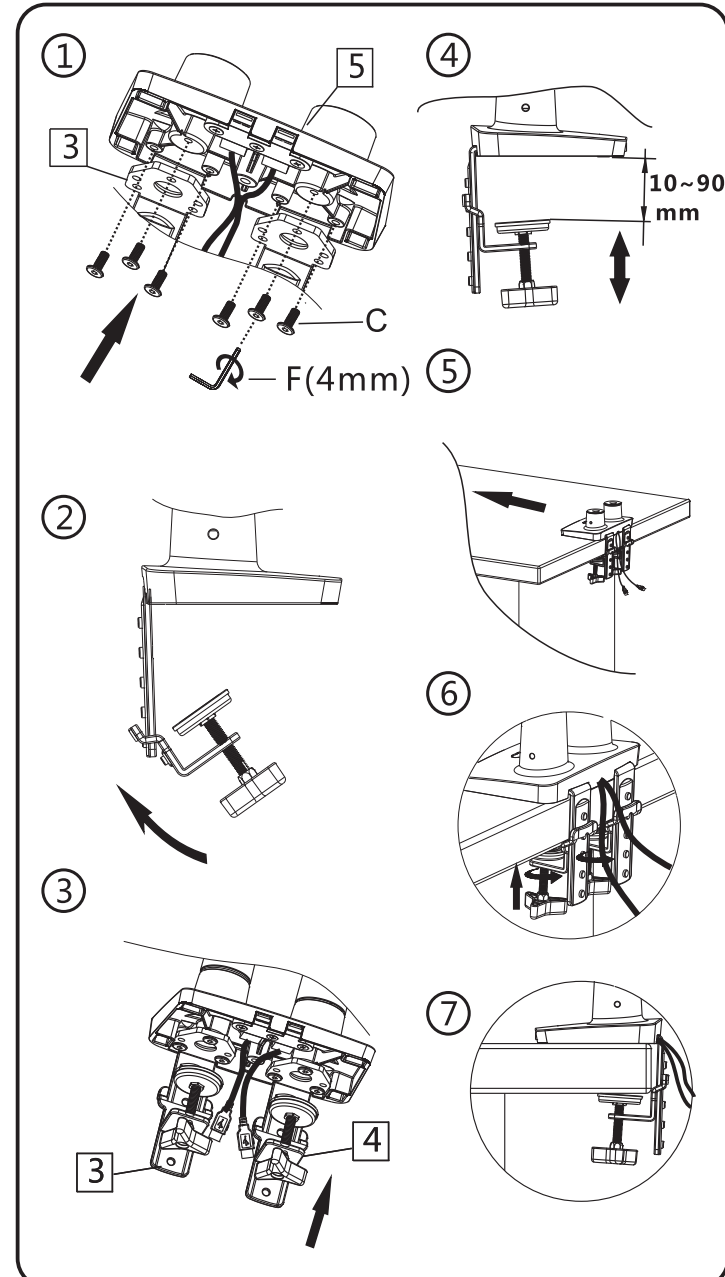
F195A Installation Manual Table Edge Installation Grommet Installation

Part list			
1		3	
	2X		2X
2		4	
	2X		
5		6	
			2X
A		B	
8x M4x12		8x M5x12	
C		D	
6x M6x12		E	
F		G	
3mm		M8x38	
4mm			
5mm		ø16xø8.2x1.5	

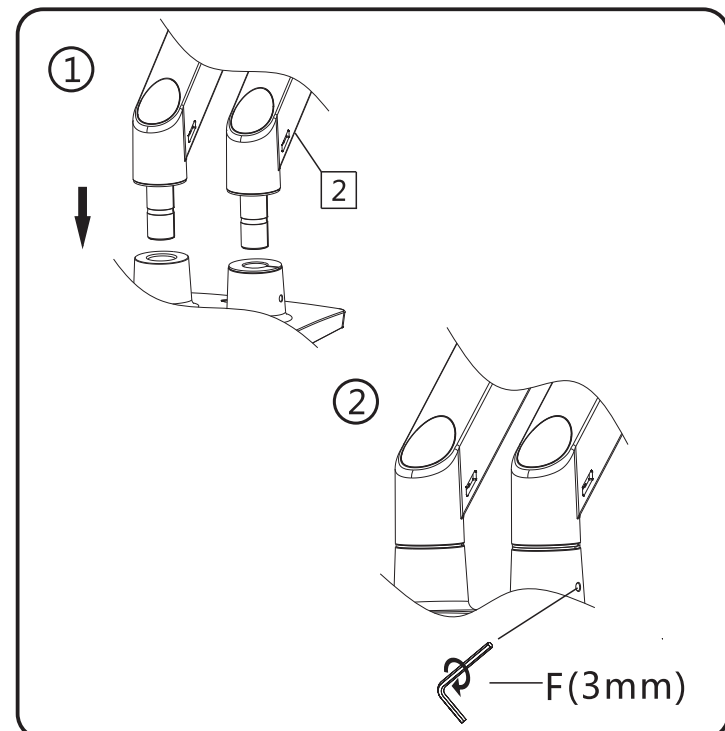
A1, Grommet Installation:



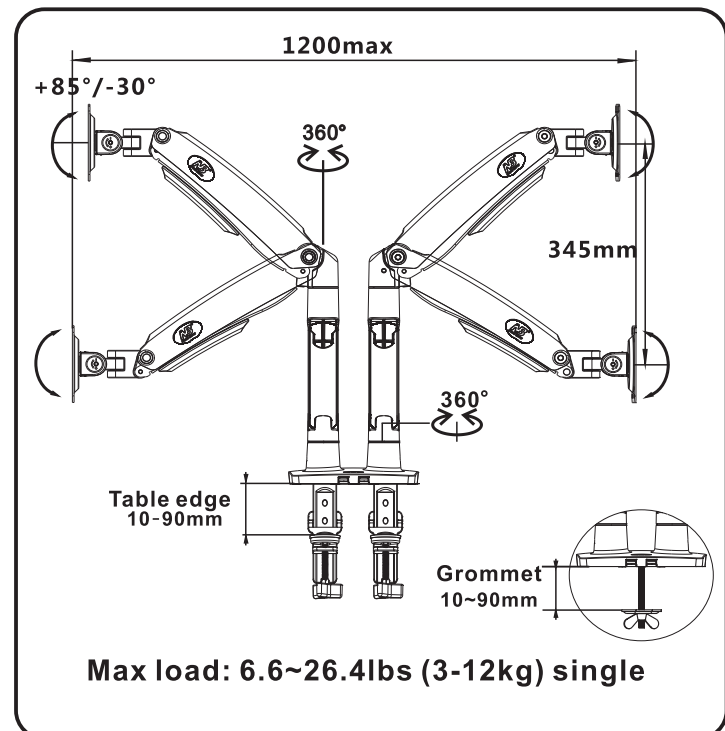
A2, Table Edge Installation :



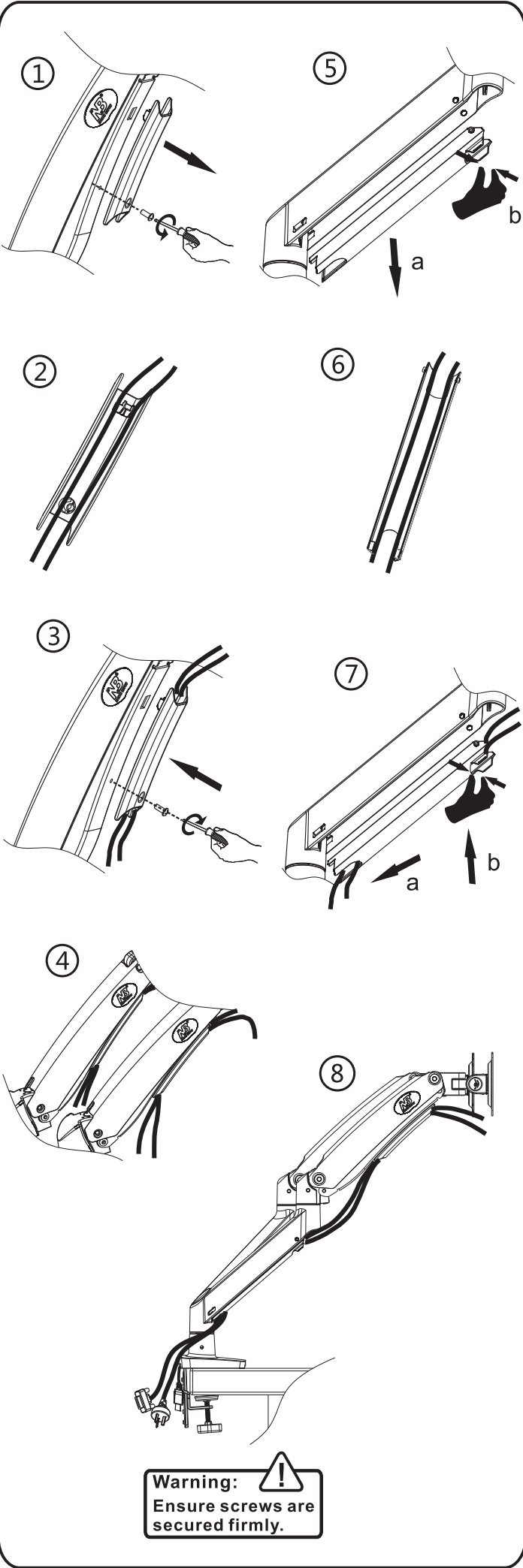
B, Arms Assembly :



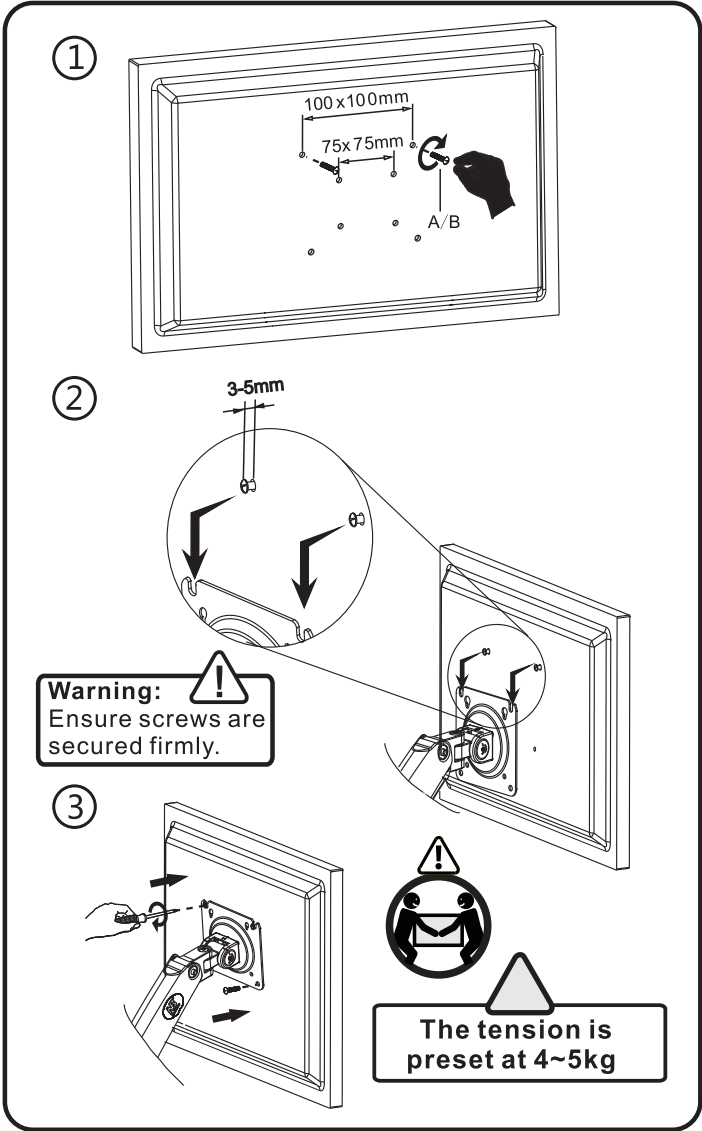
C, Adjustable Parameters :



D、Power And Display Lines Installation:

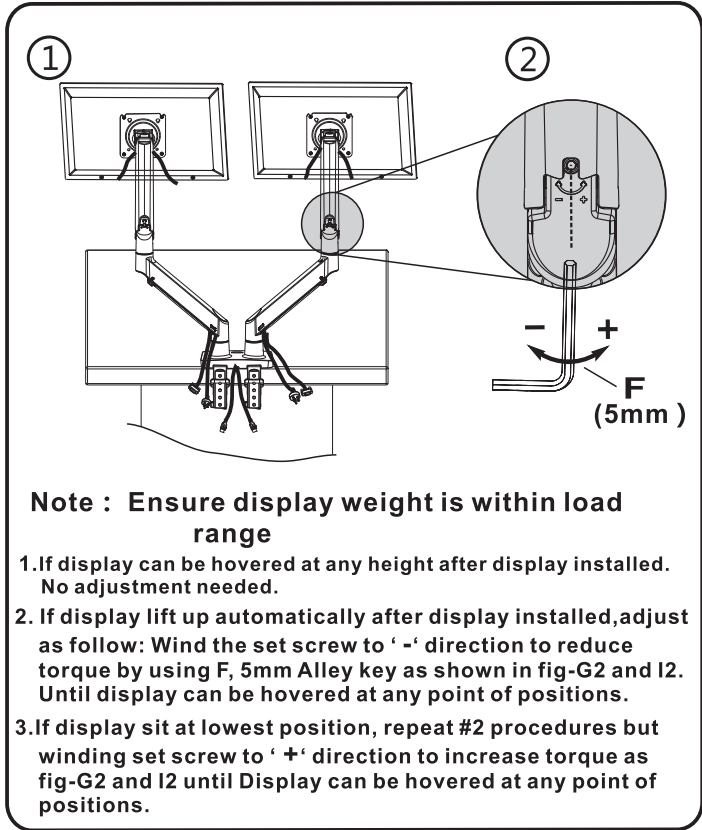


E、Display Installation

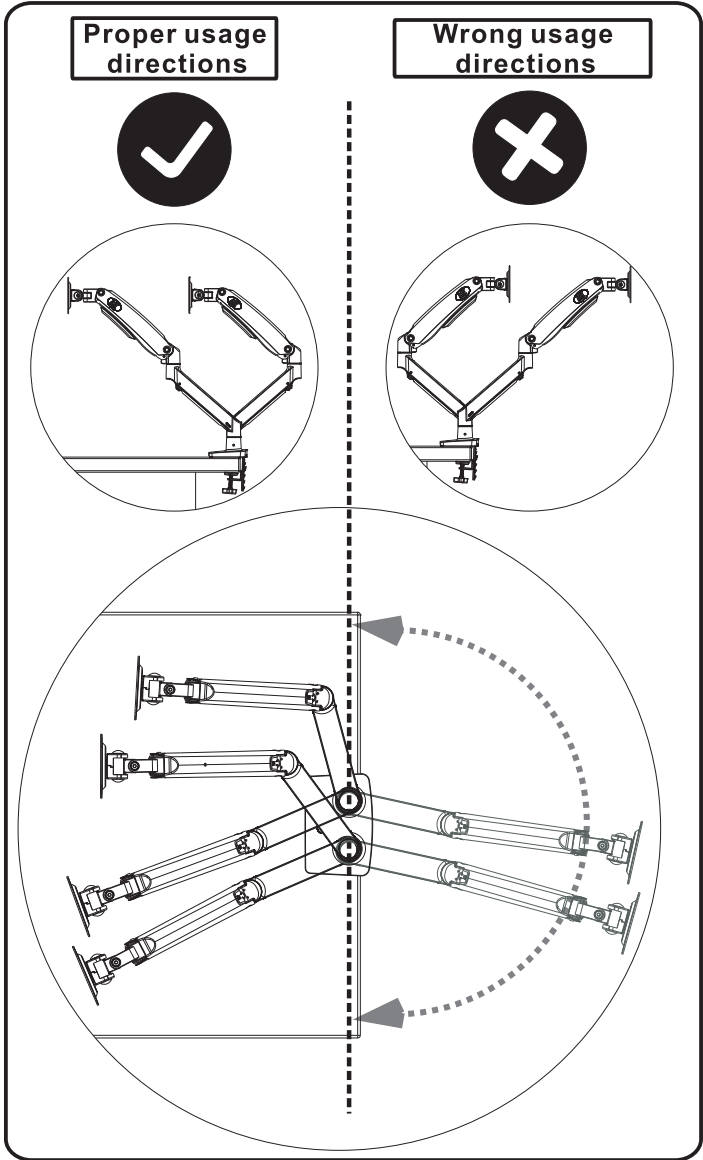


F、Torque Adjustment

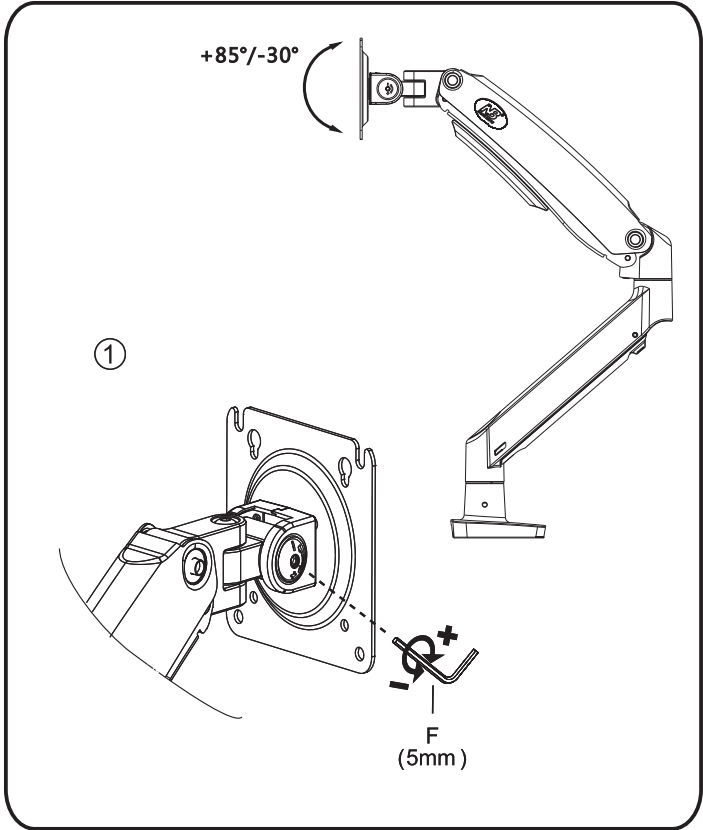
"+" : Torque increase direction shown fig-2
"- " : Torque decrease direction shown fig-2



G、Rotation Restriction



H、Display Adjustment



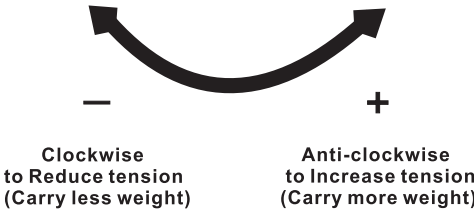
TENSION ADJUSTMENT
AFTER MOUNT INSTALLED



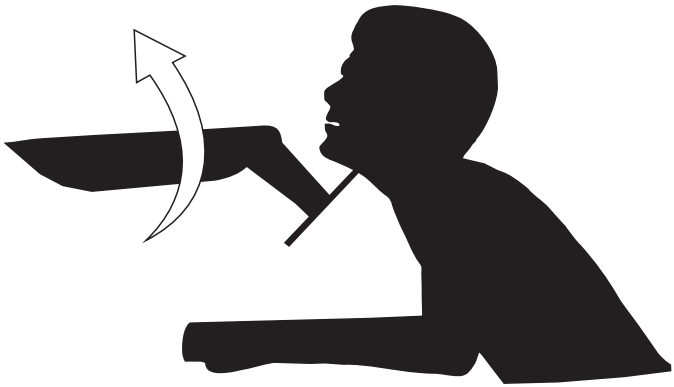
Do not adjust tention without putting on display.

- 1.Ensure displays have been put onto mount.
- 2.Read your display packaging or manual to find out display net weight.
- 3.Ensure display net weight between 6.6-26.4lbs(3-12kg)

Adjustment sign



Warning !



www.nbavmount.com

KunshanHongjie Electronics Co., Ltd.
1050, FuChunJiangRoad, Economic Development Zone
Kunshan City, Jiangsu Province, China. 215333
Mail: info@nbavmount.com

TEL: 86+512-57971777
FAX: 86+512-57970778